

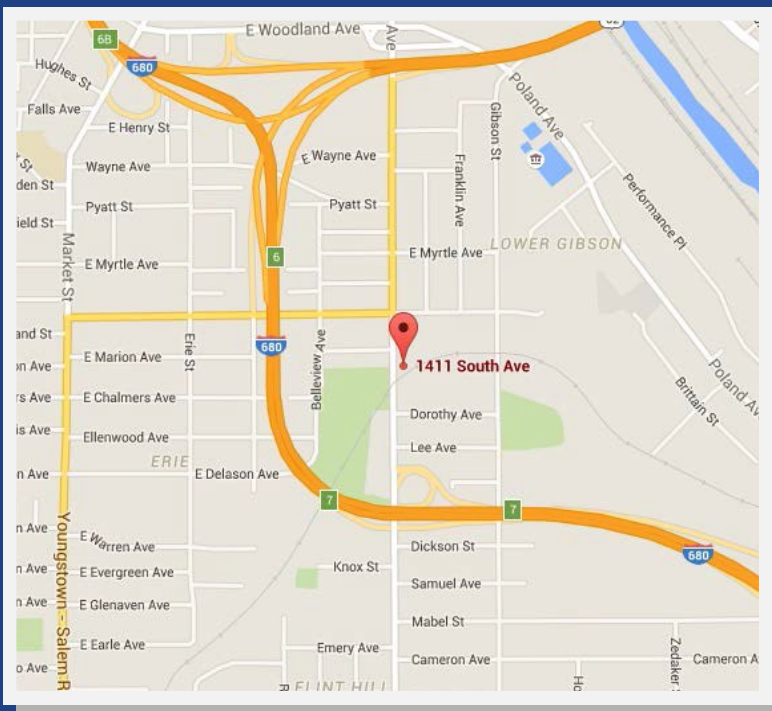


Commercial Real Estate

FOR SALE 0.43± ACRES

Asking Price: \$15,000

1411 South Ave. Youngstown, OH 44502



Property Description

This site is located just north of I-680 Exit 7 and south of Williamson by a block and a half. The vacant lot is partially paved.

MPC Unit 3668



Commercial Real Estate

1411 South Ave. Youngstown, OH 44502

Aerial Photo



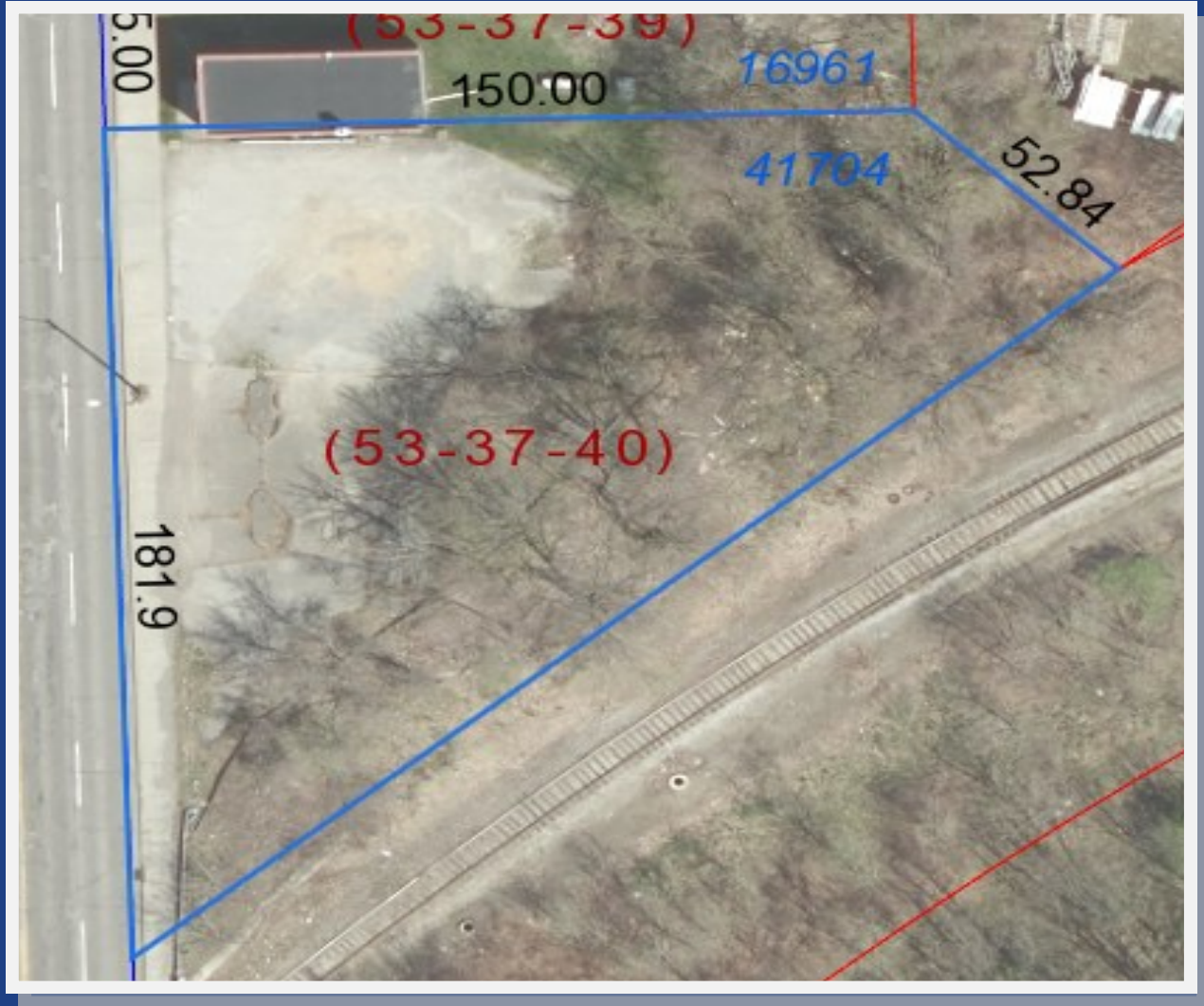
Property Information

- **Lot Size: Approx. 0.43 Acres**
- **Frontage: 172 ft. Depth: 221 ft.**
- **Zoning Commercial**
- **City Utilities: Water, Sewer, Gas, Electric**

MPC Unit 3668



Property Boundaries



Surrounding Properties

- Various Retail Sites