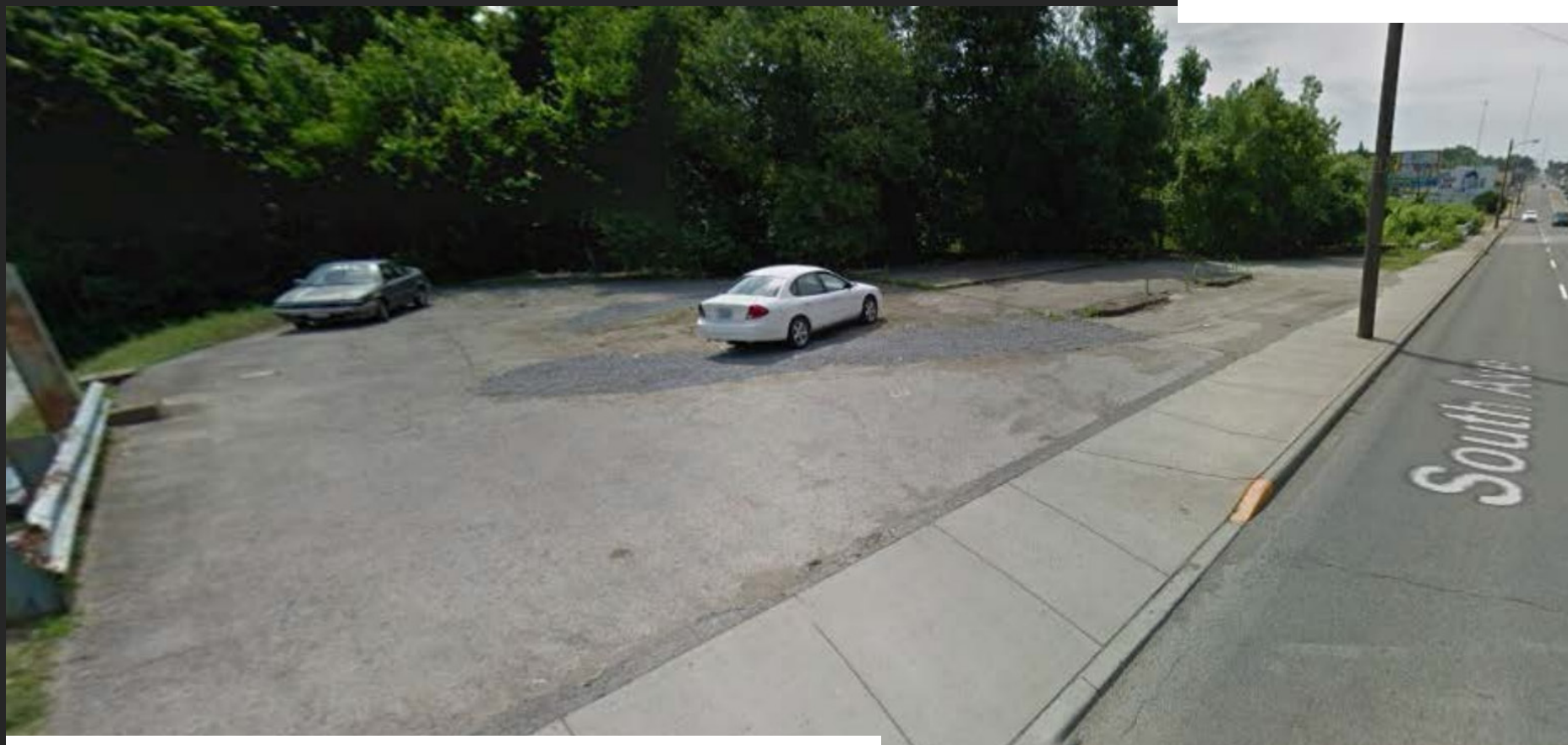




Commercial Real Estate

1411 South Ave. Youngstown, OH
44502 MPC Unit 3668

±0.43 AC



COMMERCIAL LAND FOR SALE

Asking : **\$15,000**
Price :

Located at:
1411 South Ave. Youngstown , OH
44502

Property Information:

- Lot Size: Approx. 0.43 Acres
- Frontage: 172 ft.
- Depth: 221 ft.
- Zoning: Commercial
- City Utilities: Water, Sewer, Gas, Electric

**Reach
Out**

Contact Info

(419) 421-2674
angrieser@marathonpetroleum.com



Ashley Grieser

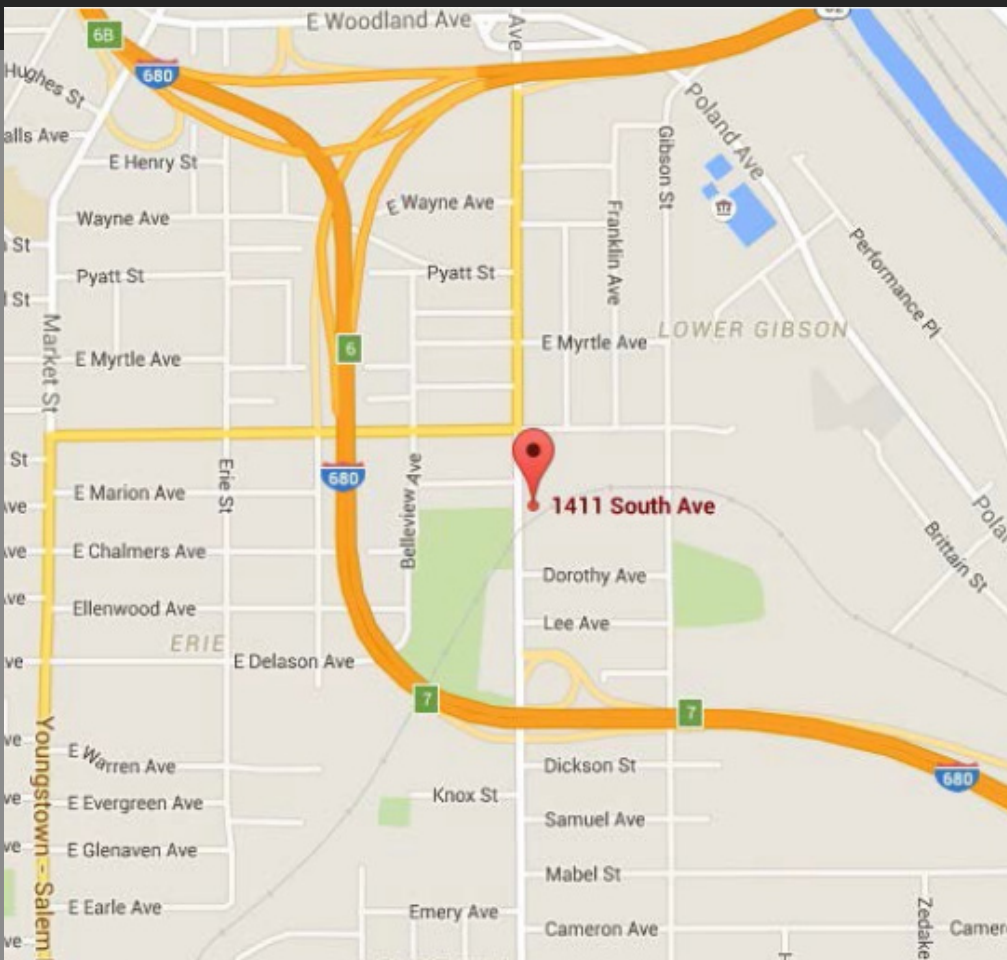
Lead Real Estate Representative

marathonpetroleumrealestate.com



Commercial Real Estate

1411 South Ave. Youngstown, OH
44502 MPC Unit 3668



Property Description:

This site is located just north of I-680 Exit 7 and south of Williamson by a block and a half. The vacant lot is partially paved.

Property may be subject to Deed Restriction/ERC



Commercial Real Estate

1411 South Ave. Youngstown, OH
44502 MPC Unit 3668

Property Boundaries:



Nearby Properties:

- Various Retail Sites